

## Kamaline Pomare



**Leadership:** Kamaline (Kam) Pomare, co-founder of Whakahono Iwi O Te Ao, epitomizes academic excellence and cultural stewardship within the esteemed Māori community. Her career embodies core values such as manaakitanga (hospitality), aroha (love), whānau (family), āhurutanga (safe space), whakakoharangatiratanga (respectful relationships), and mauri ora (holistic well-being), driving her impactful contributions in social work and education.

**Professional Excellence:** As she nears completion of her Ph.D., Kamaline's journey is marked by exemplary achievements and scholarly accolades, reflecting her exceptional intellect and unwavering commitment. Specializing in Social Work, she distinguishes herself through groundbreaking research and successful lecturing, sharing her wealth of knowledge.

**Global Influence:** Kamaline's influence transcends borders; her publications gain global recognition for insightful exploration of indigenous perspectives. Advocating for culturally responsive practices, her work challenges existing paradigms in social work and education, serving as invaluable resources worldwide.

**Cultural Bridge:** She fosters international connections, exemplified by her facilitation of cultural exchange between Chileans and Māori, showcasing the power of dialogue in building global communities. This endeavour is deeply linked to the ethos of Whakahono Iwi O Te Ao, promoting understanding and collaboration across cultures.

**Community Recognition:** Appointed a Justice of the Peace, Kamaline's dedication to justice and community service underscores her remarkable contributions.

**Legacy:** Her legacy as a transformative figure in social work and education inspires inclusivity and understanding, embodying the fusion of cultural integrity and academic excellence.

## Mihaere Emery

**Leadership:** Mihaere Emery (Handsome One) is an accomplished professional with a deep commitment to cultural specialization and social work. As one of the co-founders of Whakahono Iwi O Te Ao, he brings a wealth of expertise to the organization. Possessing a Master's degree in Applied Indigenous Knowledge, Mihaere is on a mission to address complex challenges in diverse, crisis-oriented environments, aligning seamlessly with Whakahono's dedication to positive change.



**Professional Excellence:** With a rich skill set marked by adaptability, Mihaere excels in cross-cultural contexts, ensuring services are delivered with cultural sensitivity—a core principle integral to Whakahono's mission. His ability to make informed decisions independently, particularly in safeguarding vulnerable service users, reflects a commitment to professional accountability. Mihaere's excellence is underscored by his Master's degree in Applied Indigenous Knowledge, enhancing his capacity to integrate cultural nuances into his work and contribute meaningfully to the dynamic landscape of cultural specialization and social work, in harmony with Whakahono's ethos.

**Personal Connection:** Beyond professional skills, Mihaere's strong linguistic abilities in both Te Reo Māori and English enable him to bridge communication gaps—an embodiment of Whakahono's commitment to connection. Creating a safe and supportive space, he strives to build strong relationships with individuals from diverse backgrounds, ensuring their voices are heard and valued throughout the process.

Combining professional expertise and personal qualities, Mihaere aims to make a positive impact on the individuals and communities he serves. Embracing continuous learning and cultural enrichment, he is dedicated to expanding his knowledge base to better address the evolving needs and challenges within the field of social work and cultural specialization, in harmony with Whakahono Iwi O Te Ao's mission.

## Janeca Hitchens

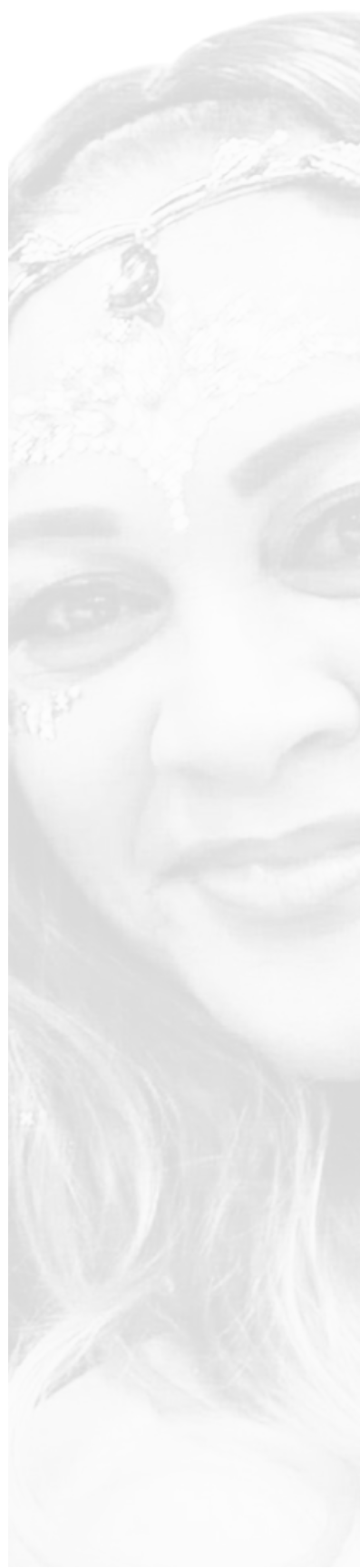


**Leadership Profile:** Janeca (Jay) Hitchens, a distinguished leader holding a Master's in Applied Indigenous Knowledge, intricately weaves her cultural roots from Niue, Samoa, and Aotearoa, New Zealand. As a co-founder of Whakahono Iwi O Te Ao, Janeca channels her extensive expertise into supporting and empowering indigenous cultures worldwide. Her visionary approach seamlessly integrates traditional wisdom with modern frameworks, fostering innovative solutions that profoundly resonate with Pacific and Māori communities.

**Leadership, Strategic Acumen, and Program Management:** Janeca, a seasoned professional with extensive experience as the former Manager of Business and adept manager of police programs at Te Wānanga o Aotearoa, epitomizes exceptional leadership and strategic acumen. Her Master's degree equips her with the tools to navigate complexities, providing invaluable insights into strategic initiatives—thus enhancing Whakahono Iwi O Te Ao's commitment to inclusivity within the Māori tertiary education system.

### **Economic Empowerment and Financial Education:**

With an extensive background spanning over twenty-five years as a mortgage broker and successful business owner, Janeca has demonstrated her expertise in economic empowerment and financial education. Janeca's commitment lies in making a difference by bridging contemporary systems and finding solutions that suit indigenous peoples' values and beliefs, navigating the terrain of finding sustainable indigenous solutions in the contemporary world. Her endeavours empower individuals to navigate Western financial frameworks while preserving indigenous perspectives. Janeca's work actively promotes financial well-being, intercultural understanding, and renewed economic empowerment within Pacific and Māori communities, echoing Whakahono Iwi O Te Ao's transformative vision.



## Ramon Saldias Cornejo



### **A Cornerstone of Educational Excellence and Linguistic Proficiency**

Ramon Saldías Cornejo, equipped with a Bachelor of Teaching degree, emerges as a beacon of educational excellence, showcasing an unwavering dedication to the teaching profession. His deep comprehension of educational principles and pedagogical practices establishes him as an authoritative figure in the realm of education.

### **Crafting Impactful Learning Experiences:**

Armed with a Bachelor of Teaching degree, Ramon harnesses a profound educational background to provide outstanding instruction and craft influential learning experiences. Demonstrating adaptability, he excels in tailoring engaging lessons to cater to the diverse needs of his students. This not only showcases his flexibility but also ensures alignment with the latest research, best practices, and evolving methodologies in education.

### **Bridging Cultures, Empowering Communities, and Linguistic Excellence:**

Ramon seamlessly extends his exceptional linguistic prowess across Chilean and Aotearoa communities, serving as a vital bridge connecting diverse cultures and languages. Through his nuanced promotion of intercultural understanding, he empowers communities in Aotearoa, playing a pivotal role in fostering connections.

In his capacity as an outstanding linguistic translator for Whakahono Iwi O Te Ao, Ramon navigates complex linguistic landscapes, fostering meaningful connections and facilitating seamless interactions across cultures. His impact resonates both locally and globally, establishing him as an indispensable asset.

In addition, Ramon's proficiency in linguistic processes extends beyond borders, demonstrating his ability to navigate linguistic complexities on a global scale. In education and linguistic translation, he stands as a highly esteemed professional, driven by an unwavering dedication to excellence. His commitment to continuous professional growth, combined with a passionate drive for bridging cultures and facilitating effective communication, positions him as an influential figure within Aotearoa communities and beyond.